



SK PRUDENCE

75M PLATFORM SUPPORT VESSEL

3000 DWT | 5916 BHP | DP 2 | FIFI 1 | 49 MEN | 650 m²

VESSEL PARTICULARS

Class	ABS ✕A1, Offshore Support Vessel (FFV1, OSR-C2, SPS, Supply-HNLS), (E), ✕AMS, ✕ACCU, ✕DPS-2- CRC, HDC (5.5t/m ² , Main Deck), RW
Flag	Malaysia
P.O.R	Port Kelang
Year Built	2021
Builder	Fujian Southeast Shipbuilding, China
IMO	9697167
Official No	337761
Call Sign	9M2985

DIMENSION

L.O.A.	75.00 m
Beam	17.25 m
Depth	8.00 m
Draft (max)	6.50 m
GRT	2948 Tonnes
NRT	913 Tonnes

CARGO CAPACITIES

Deadweight	3306 Tonnes
Deck Cargo	1200 Tonnes
Deck Loading	5.5 Tonnes/m ²
Deck Area	650 m ²
Fresh Water	550 m ³
Drill/Ballast Water	1526.9 m ³
Fuel Oil	774.5 m ³
Base Oil	739 m ³
Mud	739 m ³
Brine	739 m ³
Methanol	132.6 m ³
Dry Bulk	227.8 m ³

ACCOMMODATION

1 Man Cabin	5x 1 (5)
2 Men Cabin	22x 2 (44)
Total	49 berths
Hospital	1 berth



PROPULSION & POWER PLANT

Propellers	2x 2206kW Azimuth Thrusters
Bow Thruster	2x 650kW, 10T Thrust each
Main Engine	2x 2206 kW, 750 rpm
Main Generator	3x 450kW, 415VAC3Ph50Hz
Shaft Generator	2x 1000kW, 415VAC3Ph50Hz
Emerg Generator	1x 82kW, 415VAC3Ph50Hz

DECK MACHINERY

Tugger winch	2x 10 Tonnes SWL
Capstan	2x 10 Tonnes SWL
Provision Crane	1x 3 Tonnes SWL @ 10 m radius

CARGO HANDLING CAPACITY

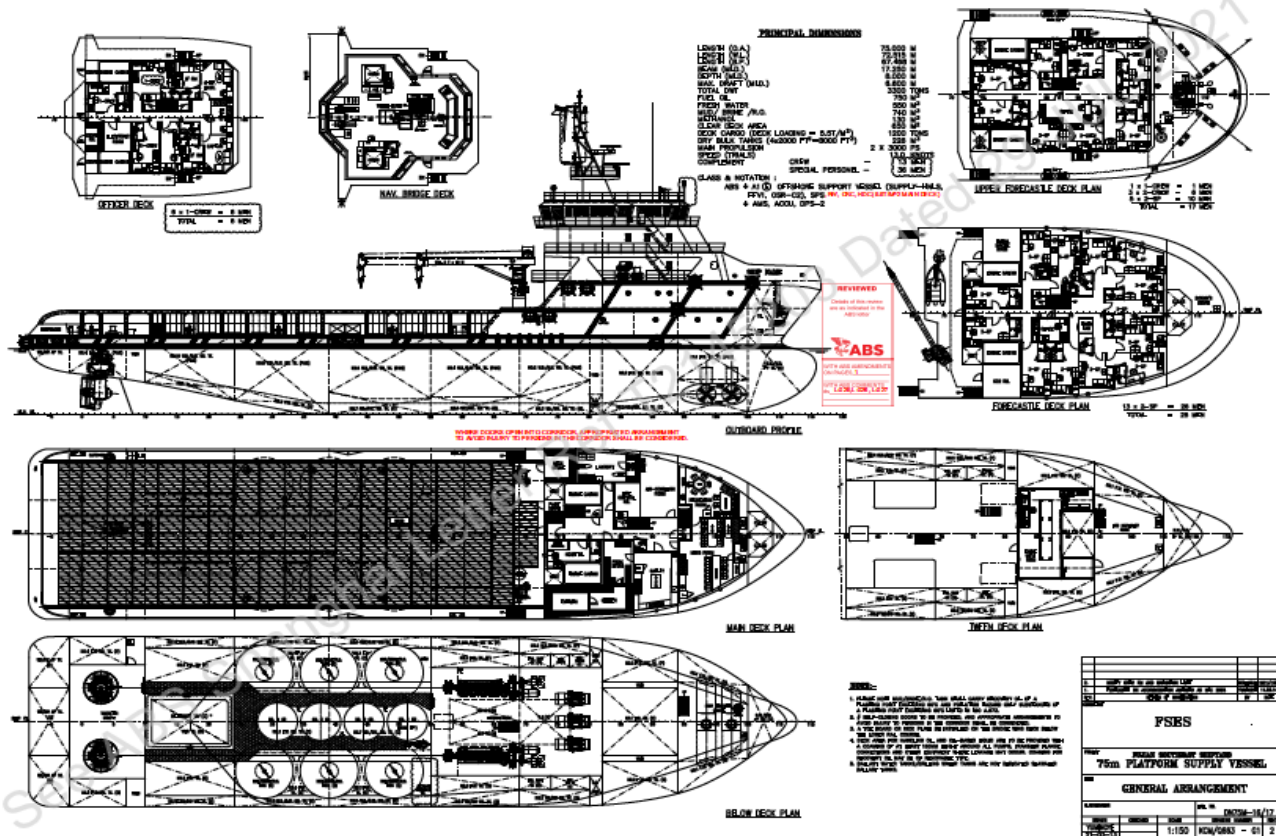
Fresh Water	1x 100 m ³ /hr @ 80 m head
Drill Water	1x 100 m ³ /hr @ 80 m head
Fuel Oil	1x 150 m ³ /hr @ 80 m head
Base Oil	
Mud	2x 75 m ³ /hr @ 90 m head
Brine	2x 75 m ³ /hr @ 90 m head
Methanol	1x 50 m ³ /hr @ 90 m head
Dry Bulk	2x 20m ³ /min @ 5.5 bar
Water Maker	1x 15 m ³ /day

PERFORMANCE

Speed	12 knots
-------	----------



SK PRUDENCE | 75M PLATFORM SUPPORT VESSEL



NAVIGATION EQUIPMENT

Radars, Magnetic Compass, Gyro Compasses, DGPSs, AIS Autopilot, Echo Sounder, Speed Log, Navtex Receiver, Weather Fax, SSAS, BNWAS, VDR

COMMUNICATION EQUIPMENT

GMDSS A1+A2+A3, VHF Radios, Auto Telephone System, EPIRB Public Address, Inmarsat C, VHF Radio, SART

FIRE-FIGHTING EQUIPMENT

External FiFi Pump: 2x 1825 m³/hr
 Monitor: 1x 1200 m³/hr (water/foam)
 Monitor: 1x 1200 m³/hr (water)
 Oil Dispersant 2x 6m spray booms with nozzles

SAFETY EQUIPMENT

Rescue Boat 1x 6 men

SKOM SDN BHD (1182610-K)

B03-B-17-1, Menara 3A, No.3, Jalan Bangsar, KL Eco City, 59200 Kuala Lumpur, Malaysia
 Tel : +603-2280 6777 | Fax : +603-2201 7778 | www.skom.com.my

Disclaimer : All information provided here is accurate at the time of printing and may be subject to change without prior notice. While every reasonable care has been taken in preparing this document. SKOM Sdn Bhd will not be held responsible for any inaccuracies.