



## MP DYNAMIC

### 78M ACCOMMODATION WORK BOAT

DP 2 | FIFI 1 | 168 MEN | 750 m<sup>2</sup>

#### VESSEL PARTICULARS

Class	ABS ✕A1 (E) SPS ✕AMS Offshore Support Vessel FFV1 ✕DPS-2 CRC RW
Flag	Malaysia
P.O.R	Port Kelang
Year Built	2015
Builder	Xiamen Shipbuilding Industry, China
IMO	9694098
Official Number	900089
Call Sign	9WNJ5

#### DIMENSION

L.O.A.	78.00 m
Beam	20.00 m
Depth	8.00 m
Draft (max)	6.40 m
GRT	4951 Tonnes
NRT	1485 Tonnes

#### CARGO CAPACITIES

Deadweight	3587 Tonnes
Deck Cargo	1000 Tonnes
Deck Loading	10 Tonnes/m <sup>2</sup>
Deck Area	750 m <sup>2</sup>
Fresh Water	1168 m <sup>3</sup>
Drill/Ballast Water	433 m <sup>3</sup>
Fuel Oil	1481 m <sup>3</sup>

#### ACCOMMODATION

1 Man Cabin	6x 1 (6)
2 Men Cabin	19x 2 (38)
4 Men Cabin	31x 4 (124)
Total	168 berths

#### FACILITIES

Lounge	1 x 40 pax
Cinema	1 x 20 pax
Office	1 x Main Deck - 3 pax 1 x 1 <sup>st</sup> Level - 6 pax 1 x 2 <sup>nd</sup> Deck - 3 pax
Gym	2 Room
Smoking Room	1x 10 pax
Hospital	2 berths



#### PROPULSION & POWER PLANT

Propellers	2x 2206KW Azimuth Thrusters
Bow Thruster	2x 785KW, 12T Thrust each
Main Engine	2x 2206KW 800 rpm
Main Generator	2x 715KW, 440V3Ph60Hz
Shaft Generator	2x 1236KW, 440V3Ph60Hz
Emerg Generator	1x 150KW, 440V3Ph60Hz

#### DECK MACHINERY

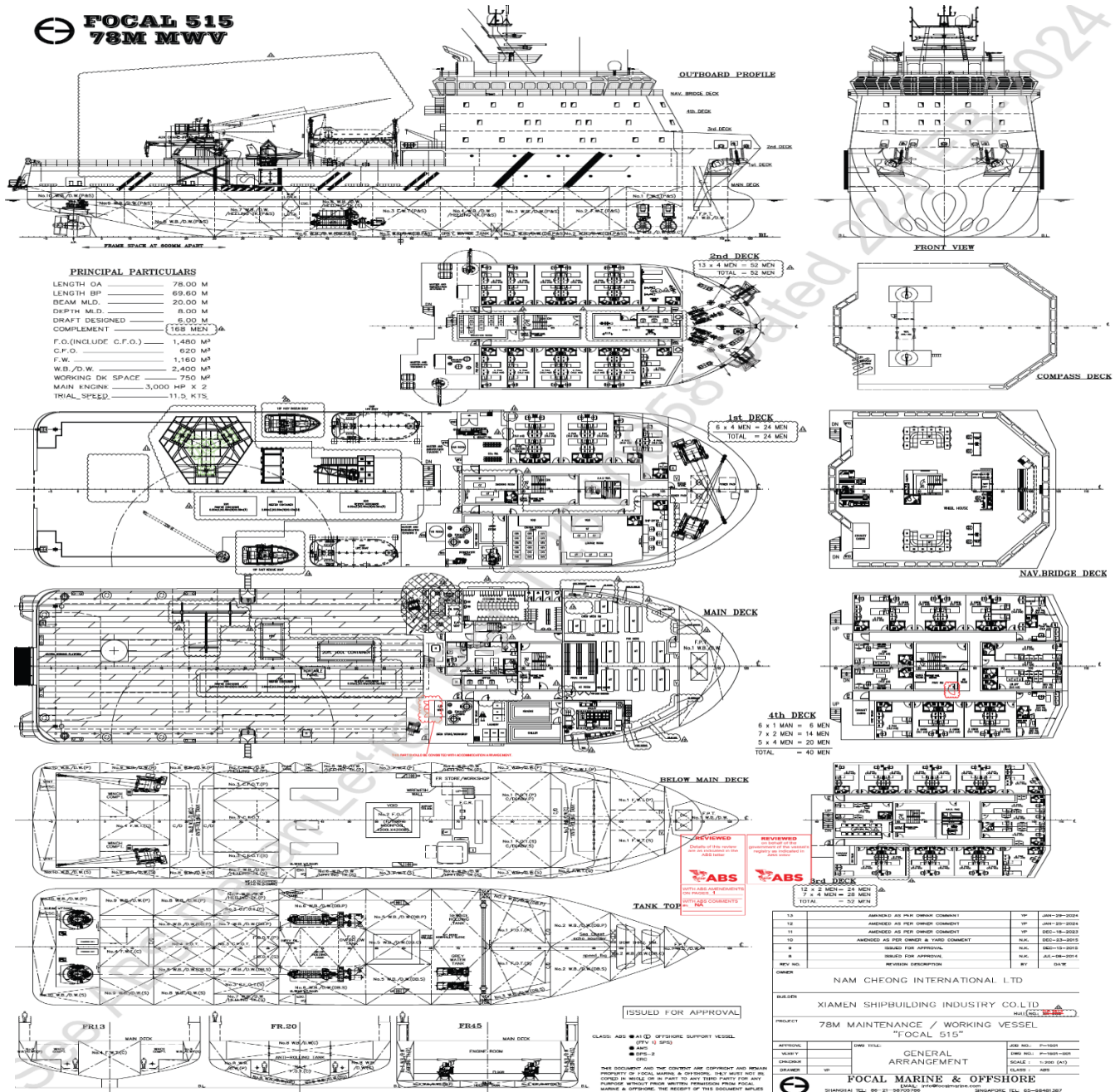
Tugger winch	2x 10 Tonnes SWL
Capstan	2x 5 Tonnes SWL
Provision Crane	1x 3 Tonnes SWL @ 12 m radius
4 Points Mooring	4x Electro-Hydraulic Mooring Winches Line pull: 50 Tonnes Brake: 120 Tonnes Drum cap: 1500m x 42mm dia. Wire 4x 5 Tonnes Delta Flipper Anchors

#### CARGO HANDLING CAPACITY

Fresh Water	1x 120 m <sup>3</sup> /hr @ 90 m head
Drill Water	1x 120 m <sup>3</sup> /hr @ 90 m head
Fuel Oil	1x 120 m <sup>3</sup> /hr @ 90 m head
Water Maker	2x 40 m <sup>3</sup> /day



## MP DYNAMIC | 78M ACCOMMODATION WORK BOAT



### NAVIGATION EQUIPMENT

Radars, Magnetic Compass, Gyro Compasses, DGPSs, AIS Autopilot, Echo Sounder, Speed Log, Navtex, Weather Fax SSAS, BNWAS, (VDR), (ECDIS)

### COMMUNICATION EQUIPMENT

GMDSS A1+A2+A3, VHF Radios, Auto Telephone, EPIRB Public Address, Batteryless Telephone, SART

### FIRE-FIGHTING EQUIPMENT

#### External FFI

Pump: 2x 1830 m<sup>3</sup>/hr @ 120 MLC  
 Monitor: 1x 1200 m<sup>3</sup>/hr (water/foam)  
 Monitor: 1x 1200 m<sup>3</sup>/hr (water)  
 2x 6m spray booms with nozzles

#### Oil Dispersant

### SAFETY EQUIPMENT

#### Rescue Boat

2x 6 men Fast Rescue Boat  
 118 KW in board engine, waterjet

#### Lifeboat

2x 100 men Life Boats

## SKOM SDN BHD (1182610-K)

B03-B-17-1, Menara 3A, No.3, Jalan Bangsar, KL Eco City, 59200 Kuala Lumpur, Malaysia

Tel : +603-2280 6777 | Fax : +603-2201 7778 | [www.skom.com.my](http://www.skom.com.my)