



# SK PIONEER

**70M ANCHOR HANDLING TUG SUPPLY VESSEL**  
120T BP | 10,728 BHP | DP2 | FIFI 1 | 40 MEN | 450M<sup>2</sup>

## VESSEL PARTICULARS

<b>Class</b>	ABS <del>✕</del> A1 Towing Vessel AH ⓔ Fire Fighting Vessel Class 1 <del>✕</del> AMS <del>✕</del> DPS-2 Offshore Support Vessel
<b>Flag</b>	Malaysia
<b>P.O.R</b>	Port Kelang
<b>Year Built</b>	2010
<b>Last D/D</b>	2021
<b>Builder</b>	Fujian SE Shipyard, China
<b>IMO</b>	9555400
<b>Official Number</b>	337098
<b>Call Sign</b>	9M2244

## DIMENSION

<b>L.O.A.</b>	70.00 m
<b>Beam</b>	16.80 m
<b>Depth</b>	7.50 m
<b>Draft (max)</b>	6.10 m
<b>GRT</b>	2708 Tonnes
<b>NRT</b>	812 Tonnes

## CARGO CAPACITIES

<b>Deadweight</b>	2000 Tonnes
<b>Deck Cargo</b>	800 Tonnes
<b>Deck Loading</b>	7.5 Tonnes/m <sup>2</sup>
<b>Deck Area</b>	450 m <sup>2</sup>
<b>Fresh Water</b>	360 m <sup>3</sup>
<b>Drill/Ballast Water</b>	440 m <sup>3</sup>
<b>Fuel Oil</b>	1245 m <sup>3</sup>
<b>Mud</b>	490 m <sup>3</sup>
<b>Brine</b>	490 m <sup>3</sup>
<b>Dry Bulk</b>	226 m <sup>3</sup>

## ACCOMMODATION

<b>1 Man Cabin</b>	10 x 1 (10)
<b>2 Men Cabin</b>	15 x 2 (30)
<b>Total</b>	40 berths
<b>Hospital</b>	1 berth

## PERFORMANCE

<b>Speed</b>	Approx 12 Kts (Max Speed)/ approx 10 kts (eco speed)
<b>Bollard Pull</b>	120 Tonnes



## PROPULSION & POWER PLANT

<b>Propellers</b>	2x Conventional CPP
<b>Bow Thruster</b>	2x 600kW, 9T Thrust each
<b>Stern Thruster</b>	1x 600kW, 9T Thrust each
<b>Main Engine</b>	2x 4000kW 750 rpm
<b>Main Generator</b>	2x 383kW, 415V3Ph50Hz
<b>Shaft Generator</b>	2x 1600kW, 415V3Ph50Hz
<b>Emerg Generator</b>	1x 65kW, 415V3Ph60Hz

## DECK MACHINERY

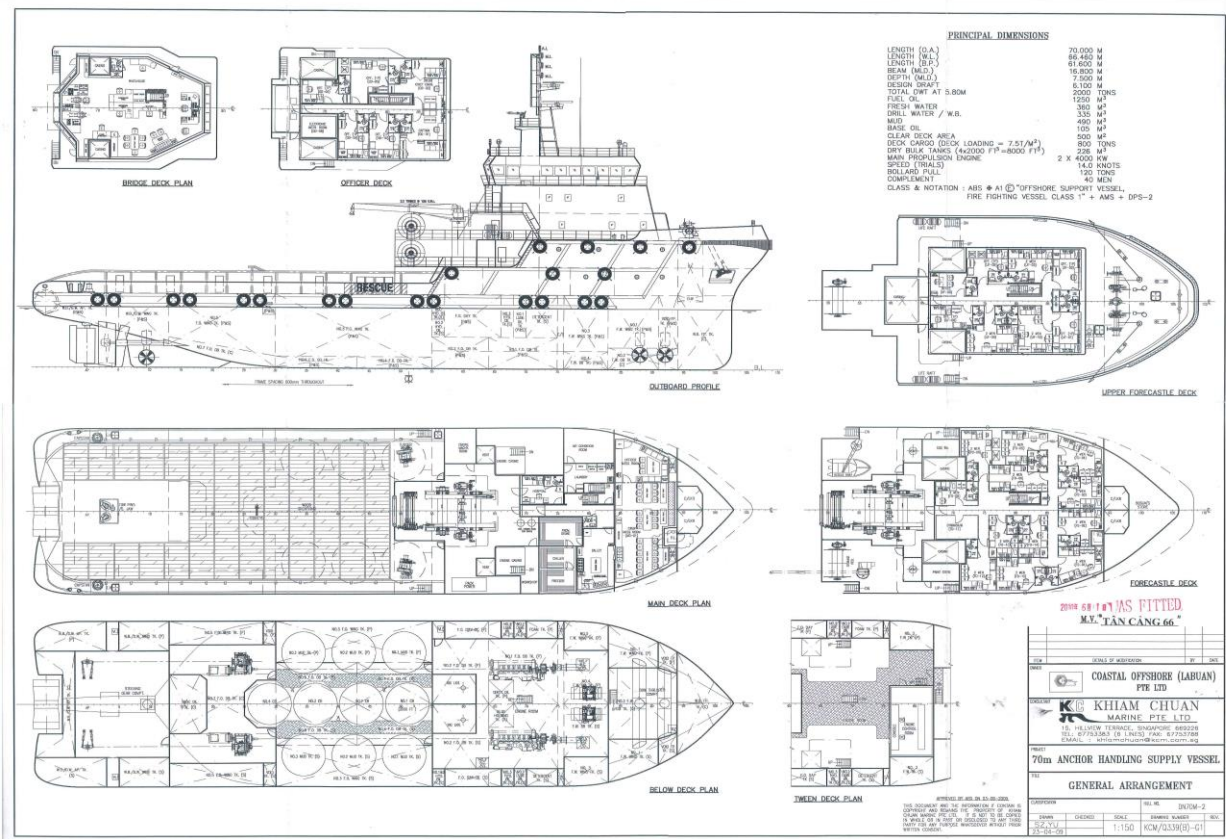
<b>Tugger winch</b>	2x 10 Tonnes SWL
<b>Capstan</b>	2x 10 Tonnes SWL
<b>Provision Crane</b>	1x 5 Tonnes SWL @ 15m radius
<b>AHT Winch</b>	1x Electro-Hydraulic Double Drum AH/T Winch Line pull: 300 Tonnes Brake: 450 Tonnes Drum cap: 2000m x 76mm dia. Wire
<b>Storage Reel</b>	2x 2000m x 76mm dia. Wire
<b>Karm fork</b>	1x 400 Tonnes SWL (Karmoy)
<b>Towing Pins</b>	2x 400 Tonnes SWL
<b>Stern Roller</b>	1x 4.65m(L) x 2.3m(dia.) 500Tonnes SWL

## CARGO HANDLING CAPACITY

<b>Fresh Water</b>	1x 150 m <sup>3</sup> /hr @ 75 m head
<b>Drill Water</b>	1x 100 m <sup>3</sup> /hr @ 75 m head
<b>Fuel Oil</b>	1x 150 m <sup>3</sup> /hr @ 75 m head
<b>Mud</b>	2x 100 m <sup>3</sup> /hr @ 75 m head
<b>Brine</b>	1x 100 m <sup>3</sup> /hr @ 75 m head
<b>Dry Bulk</b>	2x20 m <sup>3</sup> /min @ 5.9 bar
<b>Water Maker</b>	1x 10 m <sup>3</sup> /day



**SK PIONEER | 70M ANCHOR HANDLING TUG SUPPLY VESSEL**



**NAVIGATION EQUIPMENT**

Radars, Magnetic Compass, Gyro, AIS, Autopilot, Echo Sounder, Speed Log, Navtex, Weather Fax, SSAS, BNWAS

**COMMUNICATION EQUIPMENT**

GMDSS A1+A2+A3, VSAT

**FIRE-FIGHTING EQUIPMENT**

**External FiFi** Pump: 2x 1700 m<sup>3</sup>/hr  
Monitor: 2 x 1200 m<sup>3</sup>/hr (water/foam)

**Oil Dispersant** 2x 6m spray booms with nozzles

**SAFETY EQUIPMENT**

**Rescue Boat** 1x 6 men Rescue Boat

**SKOM SDN BHD (1182610-K)**

B03-B-17-1, Menara 3A, No.3, Jalan Bangsar, KL Eco City, 59200 Kuala Lumpur, Malaysia  
Tel : +603-2280 6777 | Fax : +603-2201 7778 | www.skom.com.my

Disclaimer : All information provided here is accurate at the time of printing and may be subject to change without prior notice. While every reasonable care has been taken in preparing this document. SKOM Sdn Bhd will not be held responsible for any inaccuracies.